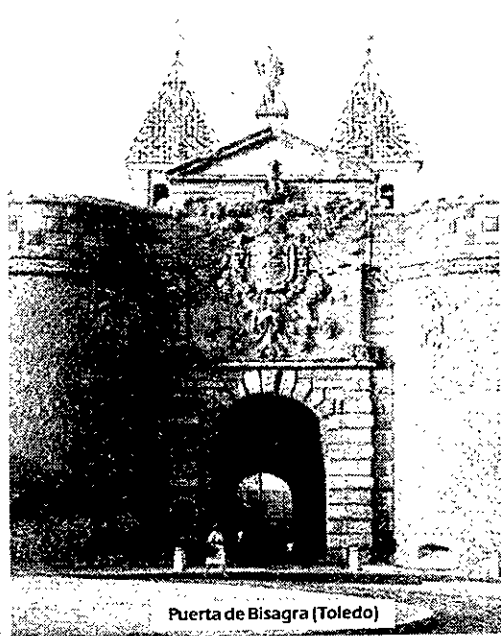


Del 19/6 al 2/7 de 1997

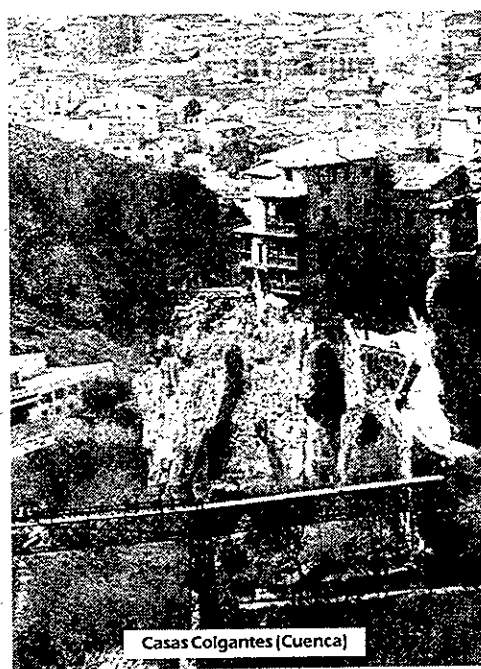
Muestra de Alimentos de Castilla - La Mancha



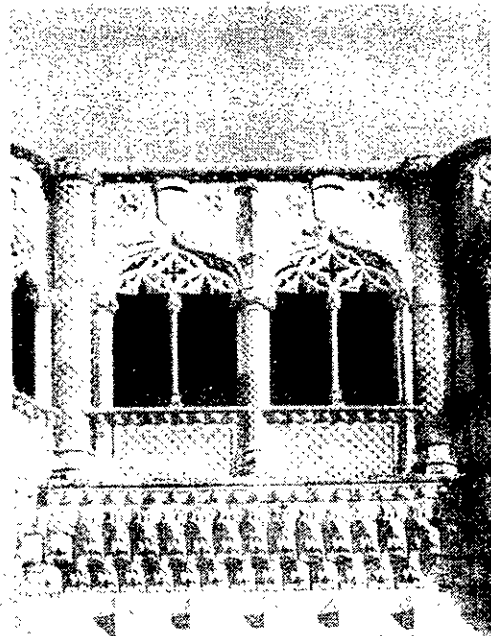
Puerta de Toledo (Ciudad Real)



Puerta de Bisagra (Toledo)



Casas Colgantes (Cuenca)

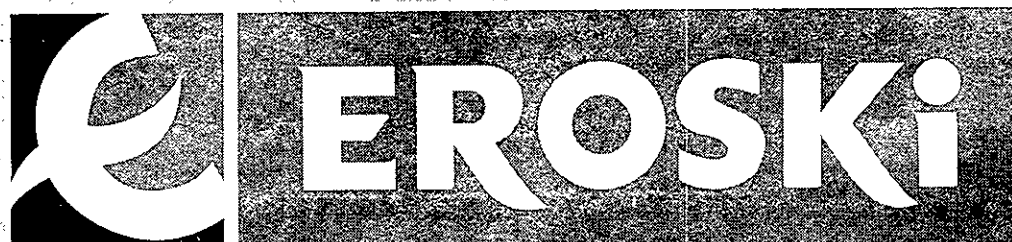


Palacio del Infantado (Guadalajara)



Puerta Recinto Ferial (Albacete)

HIPERMERCADO



GUADALAJARA